

**Parts  
Management  
Plan Builder  
29 April 2008**

**US AMC LOGSA**

**U.S.  
Army  
Materiel  
Command**





# Agenda



- **Overview**
- **Questions**

**SAMC LOGSA--Supporting Warfighters Global**



# What is SYSPARS?



**A expert system for:**

- **Preparing program planning documents**
- **Updating program plans**
- **Evaluating programs**
- **Making decisions (Decision Tree)**
- **Obtaining guidance (Links to AR, REG, i.e.)**
- **Enforcing Planning Process**



**AMC LOGSA--Supporting Warfighters Global**



# Why SYSPARS?



## “A Brief History”

### 1984 GAO Study

“... [the Army has the best ILS policy, but the worst execution.] ...”



### Now

- SYSPARS continues to be enhanced to accommodate the latest regulations, policy and procedures that exist in the area of ILS planning.
- DOCSHELL leverages the latest software application technologies. (e.g. Java)

**SAMC LOGSA--Supporting Warfighters Global**

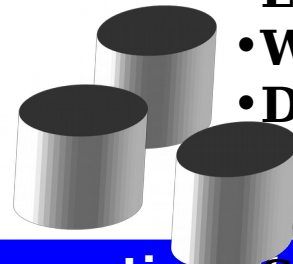
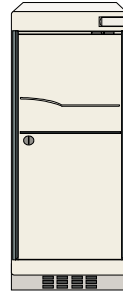
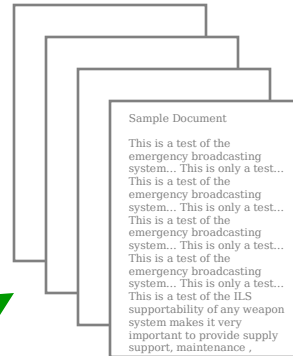
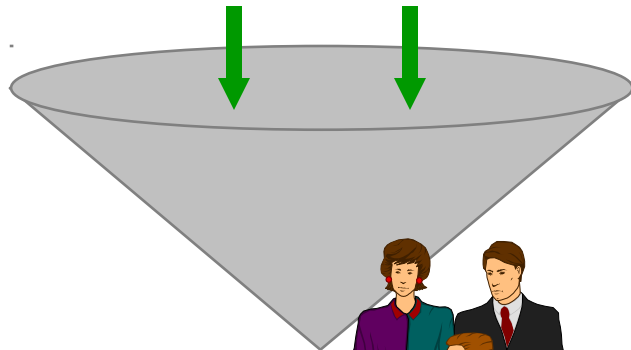


# How does it work?



## SYSPARS Integrated Documents

**Latest Policy  
Training Information  
Lessons Learned  
Expert Knowledge/Experience**



- Acquisition Strategy**
- Supportability Strategy**
- PBL Strategy**
- Materiel Fielding Plan**
- Provisioning Plan**
- Performance Based Agreement**
- ILS Statement of Work**
- Transportability Report**
- Simulation Support Plan (SSP)**
- Life Cycle Schedule**
- Warranty Advisor**
- Diminishing Manufacturing and Material Shortages (MSMS) Management Plan**
- Systems Engineering Plan (SEP)**

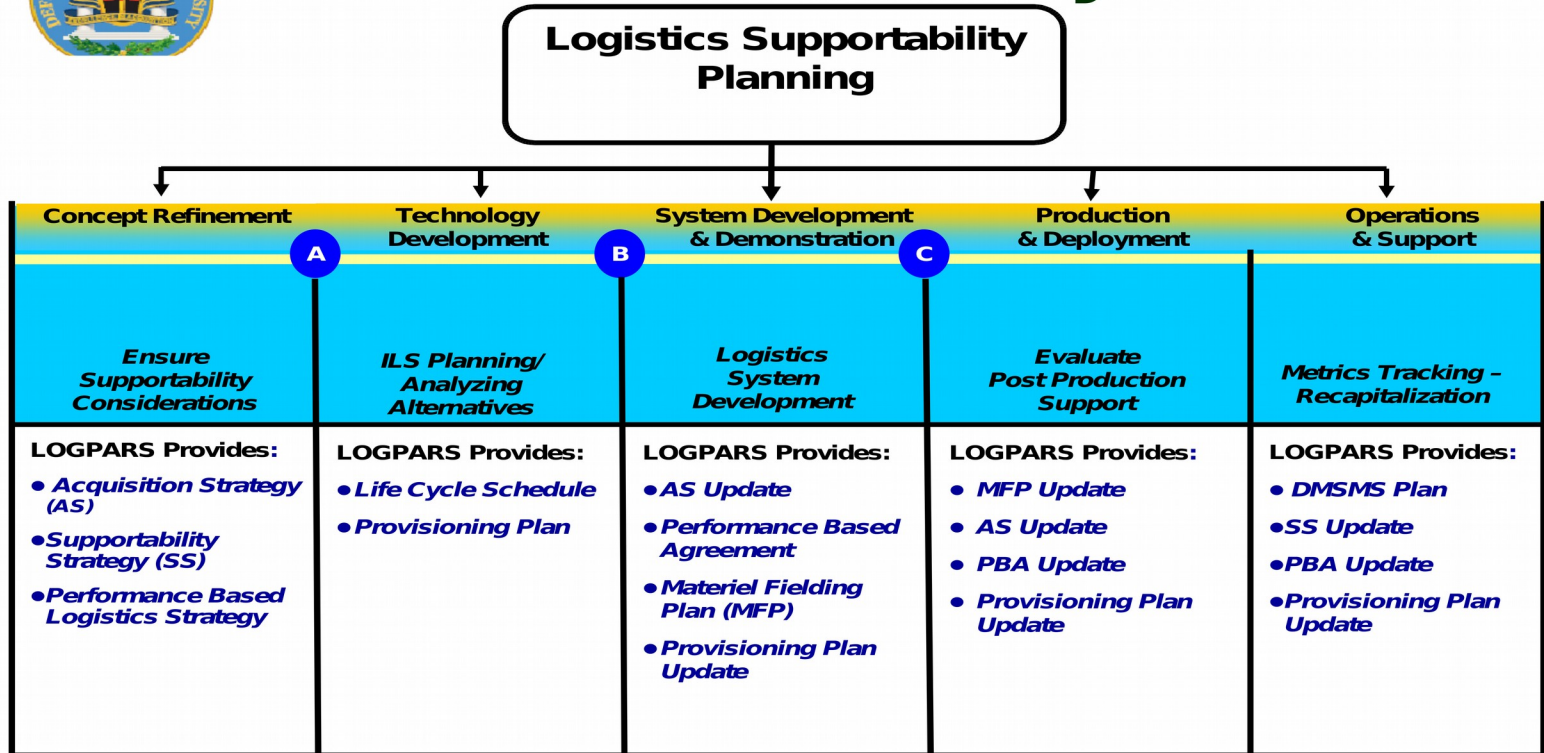
**AMC LOGSA--Supporting**



# Life Cycle



## LOGPARS in the Life Cycle



7

**SAMC LOGSA--Supporting Warfighters Globa**



# When to use SYSPARS



## When to use LOGPARS

- **In a perfect world**
  - Requirements
  - Planning
  - Development
  - Update Plans
- **Reality**
  - Wherever you are in your program
  - As soon as possible

**SAMC LOGSA--Supporting Warfighters Global**



# Features



- **Alternative document authoring process**
  - Provides a “ground-up” approach to authoring planning documents as opposed to a “Copy-Paste” approach.
- **Simple navigation based on document outline**
- **Flexible interview-style question types**
- **Supports multi-user/team efforts**
- **Automatic data sharing**
- **Continuous consistency checks**
- **Reviewer commenting capability**
- **Ensures an Expert planning process**



**SAMC LOGSA--Supporting Warfighters Globa**





# Who's using it?



- **Over 1509 Registered Users**
  - **Integrated Logistics Support Managers**
  - **Project/Program/Product Managers**
  - **Integrated Product Team Members**
  - **Matrix Support Managers**
  - **Support Contractors**
  - **Etc.**



**SAMC LOGSA--Supporting Warfighters Global**



# Current Adaptations



- **SYSPARS - Army (Over 600), Navy (320), Air Force (144), Marine Corps (73), Contractors (655)**
- **Non Supported Versions- Navy, Air Force, Marine Corps**
- **Integrated Logistics Assessment Tool - Navy**
- **Supportability Engineering Planning Tool - NASA**
- **Through Life Support Planning System - Australian Defense Force**
- **Environmental Impact of Water Projects - Department of Agriculture**



**SAMC LOGSA--Supporting Warfighters Global**



# **SYSPARS Benefits**



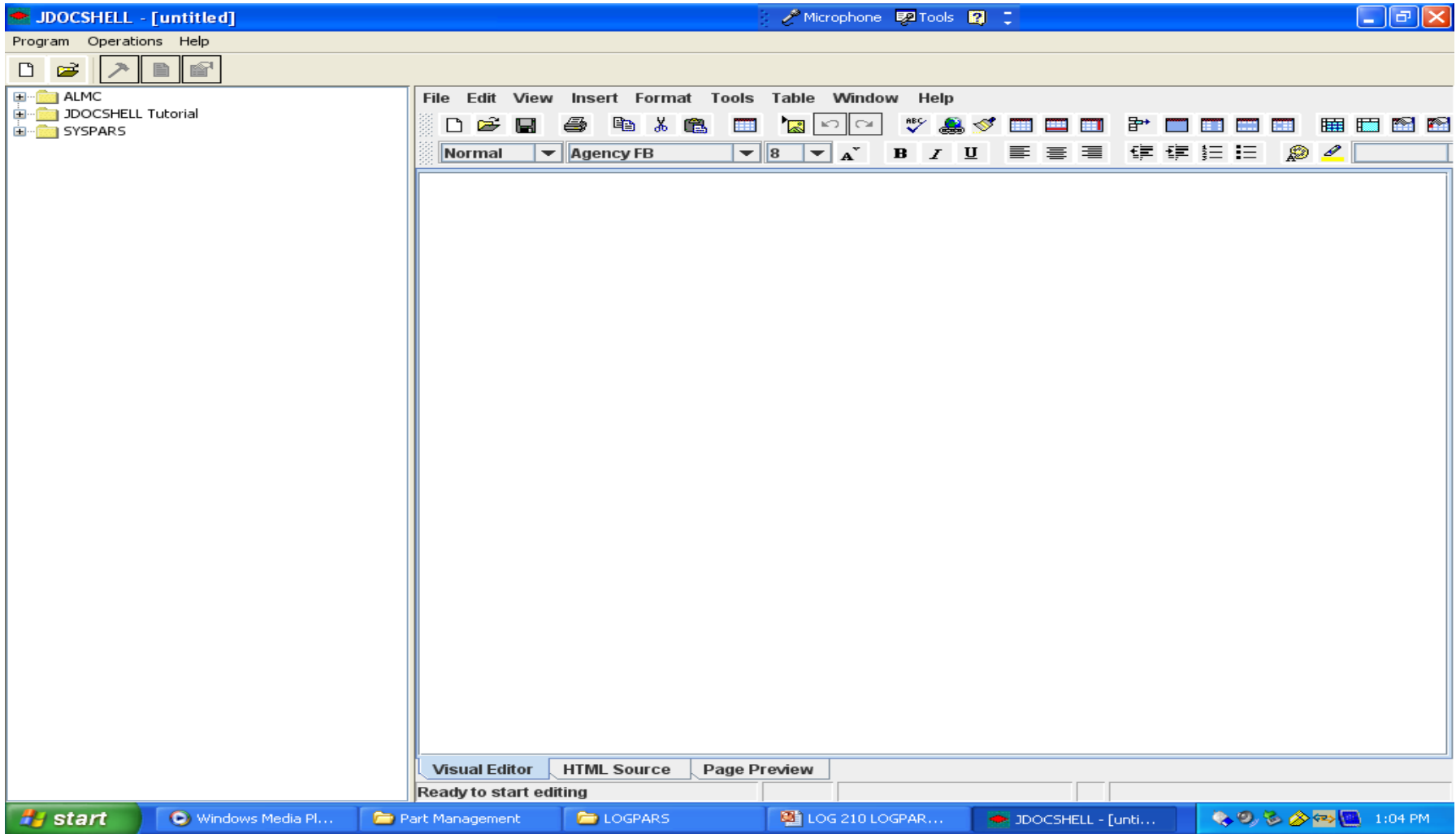
- **Reduced time to prepare plans**
- **High quality planning decisions and documents**
- **Tailored for individual program strategies**
- **Supports electronic staffing and review**
- **Training tool (DAU and on-the-job)**
- **Minimizes costly requirements omission/duplication**
- **Easy to expand, enhance, & update the Knowledge Base**



**AMC LOGSA--Supporting Warfighters Global**



# SYSPARS SCREENS



**SAMC LOGSA--Supporting Warfighters Global**



# SYSPARS SCREEN



**SAMC LOGSA--Supporting Warfighters Globa**

# SYSPARS SCREEN



**SAMC LOGSA--Supporting Warfighters Globa**

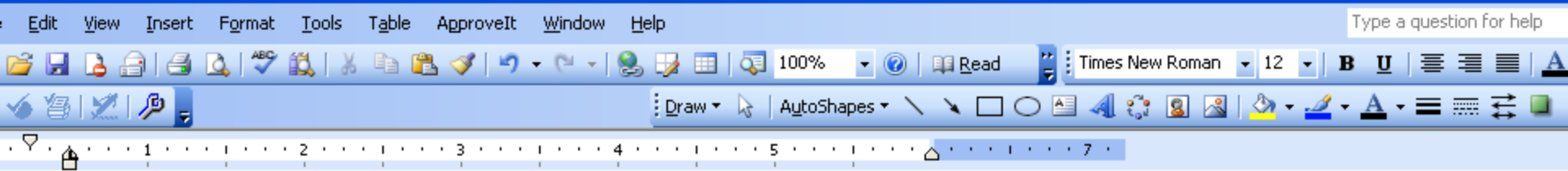


# SYSPARS SCREEN



The screenshot shows the JDOC SHELL application window. The left pane displays a hierarchical tree structure for a document titled 'SYSPARS'. The main editing area is currently blank, with a 'Question' dialog box overlaid. The dialog box has a title bar 'Question' and a close button. It contains a 'Question' tab and a 'Comments' tab. The text in the 'Question' tab reads: 'What Military Service/ Government Agency is acquiring the or is currently responsible for sustainment actions? (In those cases where a system might be used by multiple services or agencies, list the office of primary responsibility.)'. Below the text is a 'Select one' dropdown menu with the following options: Army, Navy, Air Force, Marine Corps, DLA, FAA, Coast Guard, and other. At the bottom of the dialog box are buttons for 'OK', 'Backup', 'Cancel', and 'Help'. The background application window shows a menu bar (File, Edit, View, Insert, Format, Tools, Table, Window, Help) and a toolbar with various editing tools. The status bar at the bottom of the application window indicates 'Ready to start editing'.

**SAMC LOGSA--Supporting Warfighters Globa**



- DOCSHELL Tutorial
  - Meeting Summary Memo
    - \* 1 Purpose
    - ◆ 2 Synopsis of Essential Information
    - ? 3 Required Actions
    - ◆ 4 Points of Contact
  - Meeting Planner
    - ✓ Agenda

There are five outline section status symbols. Three of them are visible in the above image. All of the section status symbols are described below:

- ✓ **Complete** - Indicates that the section has been constructed and all information required for that section has been input. (e.g. *Agenda* above)
- \* **Modified** - Indicates that the section has been impacted or "modified" based on input to another section or document. This is a direct result of the "expert system" preventing inconsistencies in the generated documents. (e.g. *1 Purpose* above)  
Modified sections should be re-constructed to produce a completed section.
- ? **Partial** - Indicates that the section is partially complete. In other words, some information required in the section is incomplete. This section status results from not answering questions (leaving them blank) while constructing a document section. (i.e. *3 Required Actions* above)
- ◆ **Comment** - Indicates that the section has a comment associated with it.  
Comments are entered by clicking on the section and choosing **View Comment** from the **Operations** menu.
- 📄 **Locked** - Indicates that the section is currently locked by another user. Sections are locked as a result of section construction, and are unlocked again when construction is completed.





# The Roadmap (Parts Management Plan)

- **History**

- **Research and Development - (Jan - April 2007)**
- **Sent to Working Group - (April 2007)**
- **Battle Creek/ overview session - (July 2007)**
- **Parts Standardization & Management Committee (April 2008)**



**SAMC LOGSA--Supporting Warfighters Global**



# The Roadmap (Parts Management Plan)

- **Milestones**

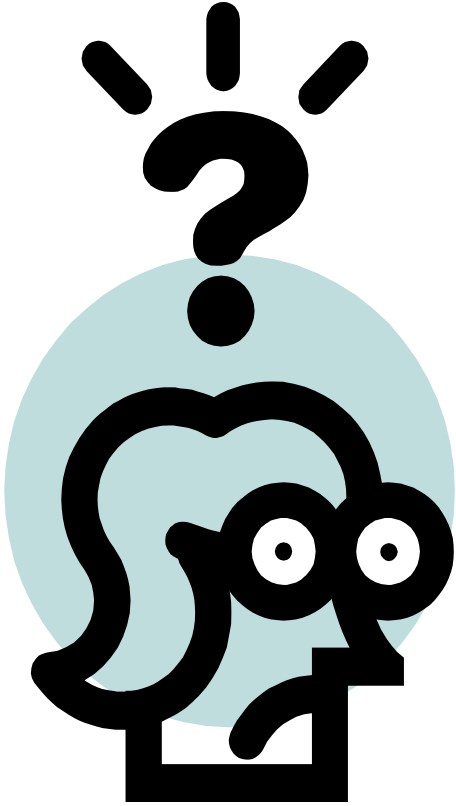
- **Alfa Test -- April 07**
- **Alfa Test Comments Due - none**
- **Beta Test -- ?**
- **Beta Test End - ?**
- **Release Software - Oct 2008???**



**SAMC LOGSA--Supporting Warfighters Global**



# Questions ? Maybe Answers . . .



<https://www.logsa.army.mil/lec/site-moved.cfm>

**SAMC LOGSA--Supporting Warfighters Global**



# SYSPARS/JDOCSHELL



**SAMC LOGSA--Supporting Warfighters Global**